



## **Evidence Document**

for Higher Learning Commission Reaccreditation

---

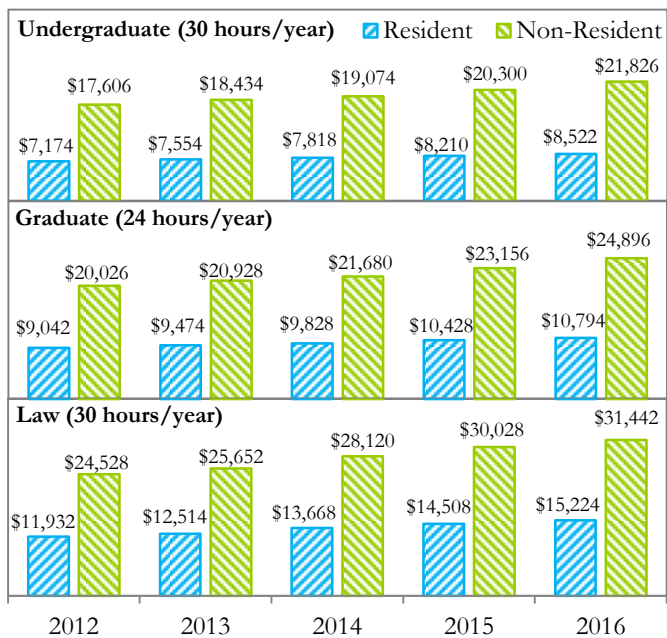
**Document Title:** 2015-16 Mini Fact Book

**Office of Origin:** Publications

### **Document Summary:**

The Office of Institutional research maintains a factbook containing our tuition and fees; rankings; enrollment trends; degrees awarded by college, level, and ethnicity; and more.

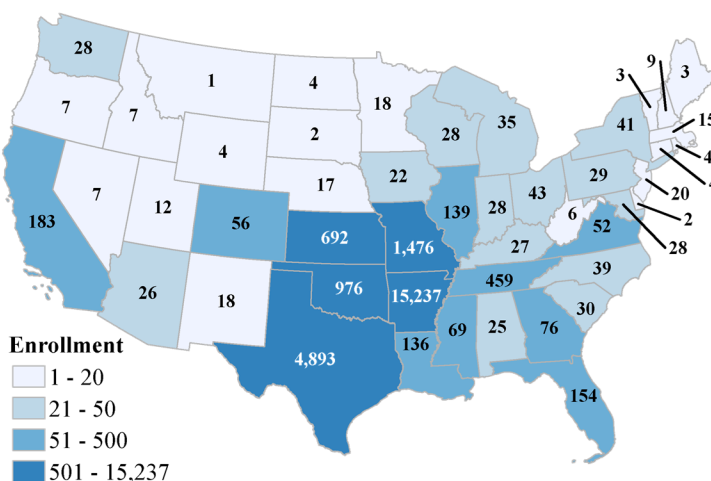
## TUITION AND FEES



## INSTRUCTIONAL FACULTY (FALL 2015)

	Male	Female	Total
<b>Total</b>	<b>778</b>	<b>542</b>	<b>1,320</b>
Full-Time	686	451	1,137
Part-Time	92	91	183
<b>Ethnicity</b>			
African American	16	19	35
American Indian/Alaska Native	3	6	9
Asian	67	25	92
Caucasian	599	403	1,002
Hispanic	15	25	40
Non-Resident Alien	35	29	64
Two or More Races	7	9	16
Unknown	36	26	62
<b>Academic Rank</b>			
Distinguished Professor	32	1	33
University Professor	19	4	23
Professor	224	59	283
Associate Professor	143	85	228
Assistant Professor	137	86	223
Instructor	111	173	284
Lecturer	112	134	246
<b>Tenure Status</b>			
Tenured	407	145	552
On Tenure Track	138	90	228
Not Tenure Track	233	307	540
<b>College</b>			
Agricultural Food and Life Sciences	108	49	157
Architecture	19	13	32
Arts and Sciences	369	259	628
Business	91	49	140
Education and Health Professions	66	125	191
Engineering	99	27	126
Law	26	20	46

## ENROLLMENT BY LEGAL RESIDENCE STATE



Enrollment not shown on map:

Alaska - 4; District of Columbia - 3; Hawaii - 11; US Territory - 1  
International - 1,545

## RANKINGS

(public institutions only)

### 2016 U.S. News & World Report

- Supply chain/logistics (graduate) ..... 9<sup>th</sup>
- Supply chain management/logistics (undergraduate) ..... 12<sup>th</sup>
- Rehabilitation counseling (graduate) ..... 12<sup>th</sup>
- Biological/agricultural engineering (graduate) ..... 18<sup>th</sup>
- Online graduate engineering program ..... 25<sup>th</sup>
- Industrial/manufacturing/systems engineering (graduate) ..... 26<sup>th</sup>
- Undergraduate business program ..... 27<sup>th</sup>
- Graduate business school ..... 32<sup>nd</sup>
- Online bachelor's program ..... 32<sup>nd</sup>
- Law school ..... 41<sup>st</sup>
- Online graduate education program ..... 43<sup>rd</sup>
- Best colleges for veterans ..... 50<sup>th</sup>
- Nursing school ..... 51<sup>st</sup>
- Electrical/electronics/communications engineering (graduate) ..... 52<sup>nd</sup>
- Online graduate nursing program ..... 54<sup>th</sup>
- School of Law ranked 6<sup>th</sup> in nation in preLaw magazine's annual "Best Value Law Schools" issue (5<sup>th</sup> year in a row as a top 20 "Best Value")
- Fay Jones School of Architecture and Design ranked 26<sup>th</sup> on the 2015 DesignIntelligence list of America's Best Architecture and Design Schools
- Clinton School of Public Service ranked 33<sup>rd</sup> in the "50 Most Innovative Public Service Schools" by Best Value Schools
- University of Arkansas ranked 34<sup>th</sup> on the "Best for Vets: Colleges 2016" list in the Military Times
- Walton College of Business' MBA program ranked 47<sup>th</sup> in the "List Of The Top 100 U.S. MBA Programs of 2015" by Poets and Quants
- University of Arkansas ranked 55<sup>th</sup> in the "2016 Best College Values" report by Kiplinger's Personal Finance magazine
- University of Arkansas listed among 'Best Colleges' in 2016 Princeton Review's annual college guide, "The Best 380 Colleges" (About 15% of America's 2,500 4-year colleges and universities are profiled in the book)

Information compiled by:

Office of Institutional Research and Assessment  
ADMN 125, Fayetteville, AR 72701  
Phone: (479) 575-5252; Fax: (479) 575-6766  
<http://oir.uark.edu>



# UNIVERSITY OF ARKANSAS

## 2015 — 2016 MINI FACT BOOK

<http://oir.uark.edu/factbook.pdf>

## QUICK FACTS

- ◆ Founded in 1871
- ◆ Students, female/male: 52 percent/48 percent
- ◆ Average freshman high school GPA: 3.64
- ◆ Average ACT: 25.9
- ◆ Instructional faculty: 1,320
  - ◆ Full-time: 1,137
  - ◆ Part-time: 183
- ◆ Student-to-faculty ratio: 19 to 1
- ◆ Research expenditures (fiscal year 2014): \$128,634,378
- ◆ Annual University scholarship and fellowship expenditures (fiscal year 2014): \$24,340,455
- ◆ Academic programs: 236 degrees and certificates, with 85 major fields of undergraduate study, 81 master's degree programs, 40 doctoral programs, 2 specialist degrees, and 26 certificates

## Carnegie Classification

**Very high research university**

## Fall 2015 Enrollment

**26,754**

(↗ by 2%, since Fall 2014)

➔ **22,159 Undergraduate**

➔ **4,220 Graduate**

➔ **375 Law**

## PRIDE POINTS

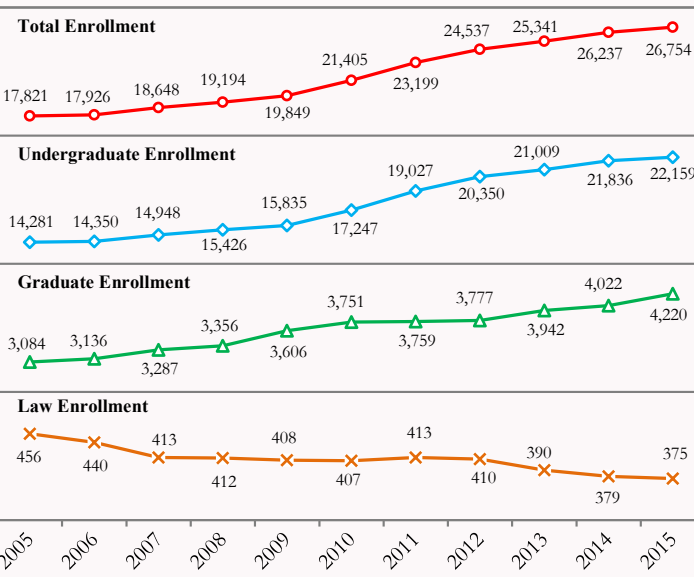
- ◆ University of Arkansas (UA) ranked 7<sup>th</sup> fastest growing public research university in a survey published by the national Chronicle of Higher Education
- ◆ Prestigious, nationally competitive awards in 2015—1 Truman Scholar, 1 Goldwater Scholar, 2 Udall Scholars, 10 NSF GRFPs, and 7 Fulbright Scholars
  - ◆ Goldwater Scholars – All-time total of 50 scholars ranks UA 1<sup>st</sup> in SEC & 16<sup>th</sup> among public universities (20<sup>th</sup> consecutive year with at least one Goldwater Scholar)
  - ◆ Truman Scholars – All-time total of 19 scholars ranks UA 1<sup>st</sup> in SEC & 14<sup>th</sup> among public universities
  - ◆ Rhodes Scholars – All-time total of 10 scholars ranks UA 38<sup>th</sup> among public universities
  - ◆ UA among one of eight schools in the nation with winners of the three major junior awards (Truman, Goldwater, and Udall), and one of seven schools with two or more Udall scholars in 2015

"Fayetteville's southern charm, modern arts scene and innovative business schemes create a place that draws young families who crave a unique yet traditional small-town vibe"  
- *Livability.com*

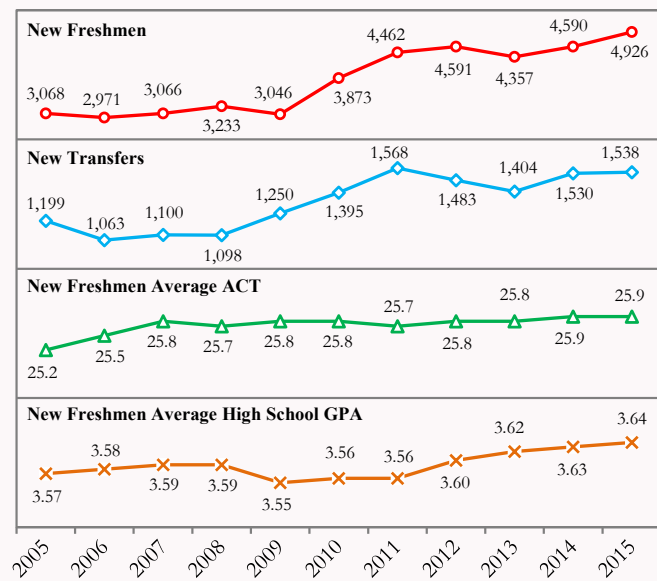
## ENROLLMENT (FALL 2015)

	Undergraduate	Law	Graduate	Total
<b>Total</b>	<b>22,159</b>	<b>375</b>	<b>4,220</b>	<b>26,754</b>
<b>Gender</b>				
Male	10,588	223	2,144	12,955
Female	11,571	152	2,076	13,799
<b>Ethnicity</b>				
African American	1,052	18	264	1,334
American Indian/Alaska Native	245	10	60	315
Asian	551	7	87	645
Caucasian	16,988	301	2,774	20,063
Hawaiian/Pacific Islander	18	1	1	20
Hispanic	1,660	21	193	1,874
Non-Resident Alien	829	3	713	1,545
Two or More Races	721	10	87	818
Unknown	95	4	41	140
<b>Current Legal Residence</b>				
Arkansas Resident	12,740	310	2,187	15,237
Non-Arkansas Resident (U.S.)	8,590	62	1,320	9,972
Foreign	829	3	713	1,545
<b>College</b>				
Agricultural Food and Life Sciences	1,811	-	357	2,168
Architecture	481	-	-	481
Arts and Sciences	6,957	-	913	7,870
Business	5,432	-	446	5,878
Education and Health Professions	4,089	-	1,321	5,410
Engineering	3,331	-	927	4,258
Independent Study	58	-	-	58
Interdisciplinary	-	-	256	256
Law	-	375	-	375
<b>Student Level</b>				
Freshman	6,322	-	-	6,322
Sophomore	4,613	-	-	4,613
Junior	4,730	-	-	4,730
Senior	6,485	-	-	6,485
Master	-	-	2,533	2,533
Doctorate	-	-	1,321	1,321
Professional Year 1	-	131	-	131
Professional Year 2	-	115	-	115
Professional Year 3	-	107	-	107
Master of Law	-	22	-	22
Master's Certificate	-	-	10	10
Graduate Non-Degree	-	-	285	285
Graduate Specialist	-	-	21	21
Undergraduate Certificate	9	-	-	9
Graduate Certificate	-	-	50	50

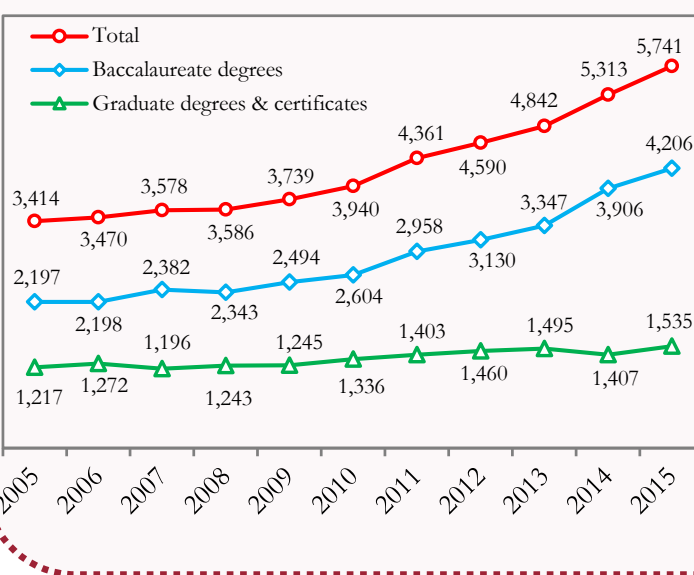
## ENROLLMENT TRENDS



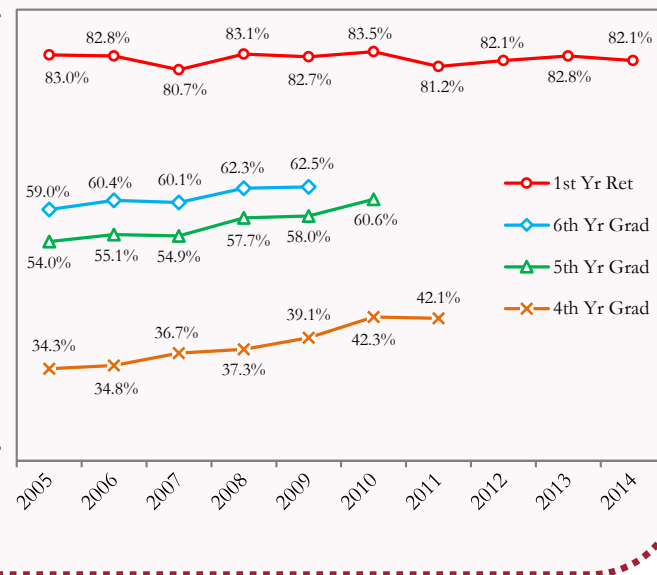
## NEW STUDENT TRENDS



## CREDENTIALS AWARDED TRENDS



## RETENTION AND GRADUATION



## DEGREES AWARDED, 2014-2015

	Male	Female	Total
<b>Total</b>	<b>2,812</b>	<b>2,929</b>	<b>5,741</b>
<b>Level</b>			
Baccalaureate	2,016	2,190	4,206
Master's	612	596	1,208
Specialist	1	1	2
Doctoral - research/scholarship	97	76	173
Doctoral - first professional	79	55	134
Graduate certificate	6	9	15
Post-master certificate	1	2	3

## DEGREES AWARDED, 2014-2015 (contd...)

	Male	Female	Total
<b>Ethnicity</b>			
African American	120	132	252
American Indian/Alaska Native	38	37	75
Asian	87	70	157
Caucasian	2,122	2,274	4,396
Hawaiian/Pacific Islander	2	-	2
Hispanic	139	169	308
Non-Resident Alien	209	161	370
Two or More Races	85	78	163
Unknown	10	8	18

## DEGREES AWARDED, 2014-2015 (contd...)

	Male	Female	Total
<b>College</b>			
Agricultural, Food and Life Sciences	214	333	547
Architecture	40	41	81
Arts and Sciences	815	965	1,780
Business	694	372	1,066
Education and Health Professions	288	945	1,233
Engineering	635	188	823
Interdisciplinary	41	26	67
Law	85	59	144